



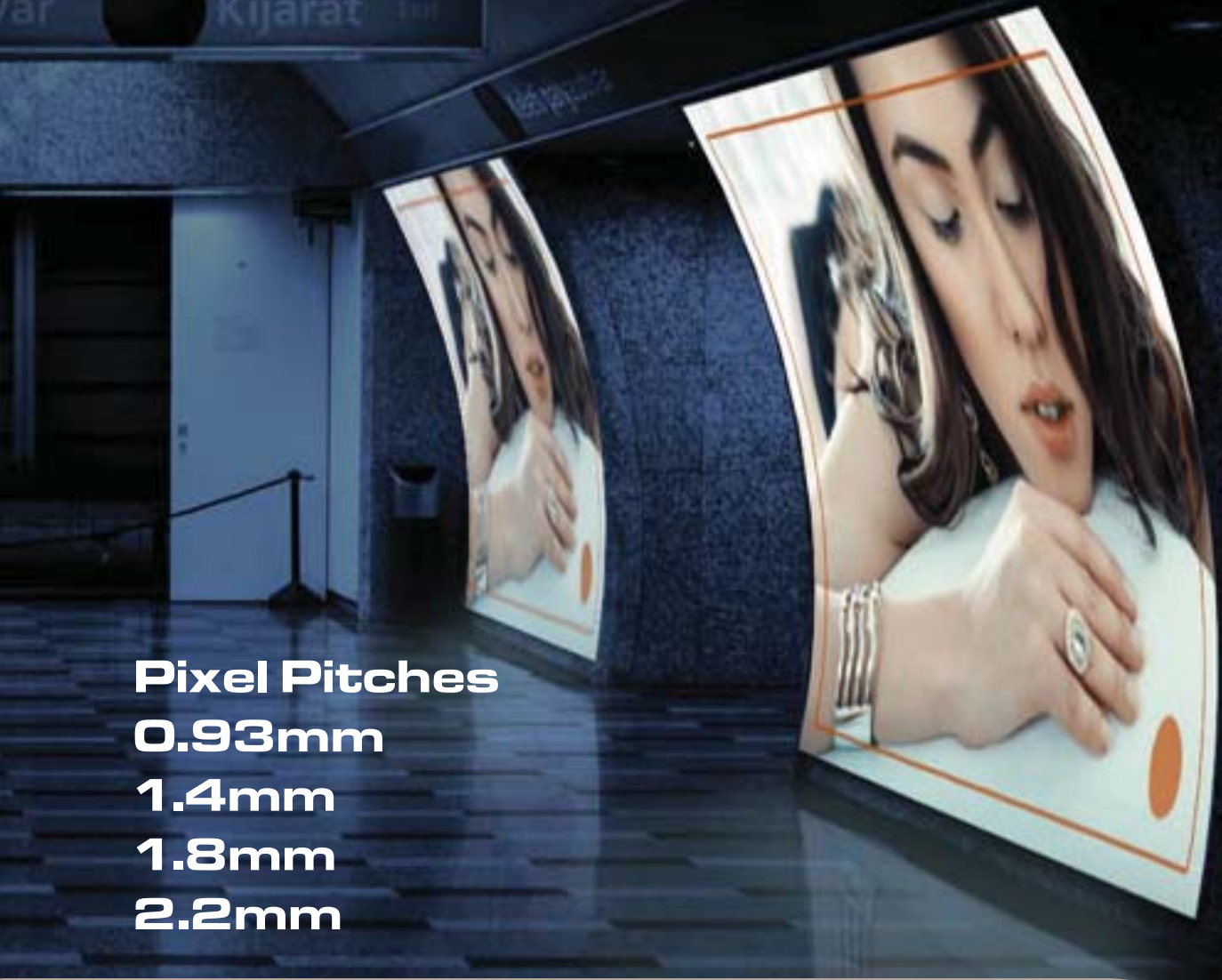
digiLED

ECL!PSE

high resolution LED display system

AV Rental & Fixed Installations

ar Kijarat



Pixel Pitches

0.93mm

1.4mm

1.8mm

2.2mm

digiLED ECL!PSE - technology never seen before,
delivering unimagined image quality.



digiLED

Contact T +44 0 20 7381 7840 info@digiLED.com www.digiLED.com

REV02/15.09.16/AC

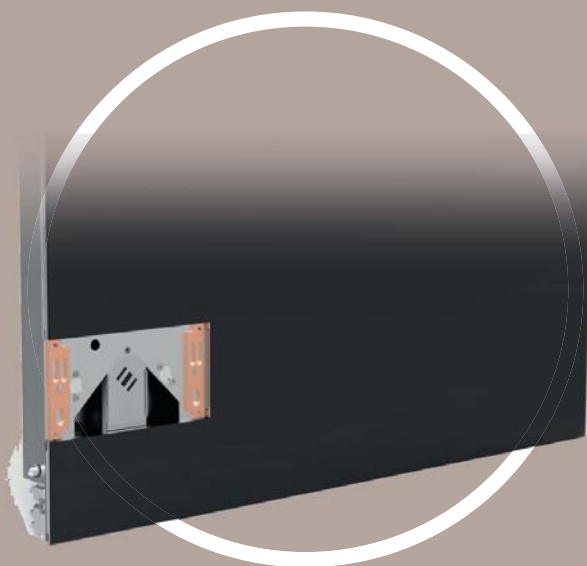
digILED ECLIPSE - technology never seen before, delivering unimagined image quality

The new ECLIPSE range from digILED is ground-breaking to say the least, but most importantly, the image quality is beyond compare in the ultra hi-res sector.

With innovative features that make the system simple to install, programme and maintain, it's crystal clear that everything is aligned for ECLIPSE to take centre stage in the large format video displays market.

And it's not just the electronics that are next-generation; working with a minimum form factor of 216mm x 108mm, and high-precision mechanics with tolerances of <0.046mm, smooth seamless faceted curves can be formed if something a little different to a conventional flat screen is required.

Service access can be from the front or rear, and the extra low voltage power distribution means you can store power supplies remotely from the screen surface - this has the added benefit that displays can be super slim at just a few millimetres' depth.



With:

- **Tough Touch Screen for unprecedented ruggedness**
- **The Blackest blacks**
- **1,500 - 4,500 nits**
- **Up to 5 years warranty**
- **Batch to batch matching**

- **ECLIPSE's 0.93mm pitch - HD resolution achievable at under 2m width.**

- **Sophisticated content upscaling with ZERO processing artefacts.**

Whatever your market, ECLIPSE is a visionary solution:

Retail
DOOH
Travel hubs
Corporate
Education
Entertainment
Broadcast studio
AV Rental



digiLED ECLIPSE

MODULE INFORMATION

Vibrant Visual Acuity

Crisp, super sharp images and a colour pallet greater than the human eye can perceive; A display's first point of reference is its potential resolution and with up to 3.4 million LED chips per square metre, nothing else comes close to the performance offered by digiLED's new ECLIPSE technology.

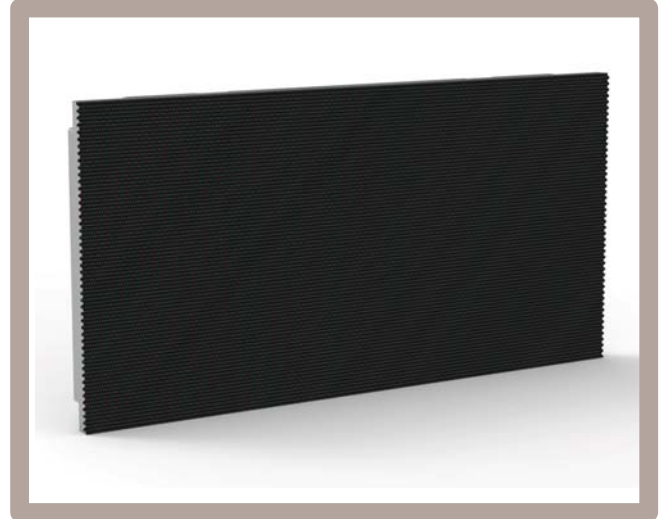
Using propriety control software, the system offers enhanced greyscales with perfect gradation allowing even the dark areas of an image to be perfectly described in full detail with no 'posterisation' or apparent artifacts.

Brightness To Burn

The ECLIPSE is equally happy working indoor or out, even in direct sunlight, thanks to its industry leading light output. Utilising the latest progressive drive electronics, ECLIPSE series offers up to 4,500 nits brightness whilst working at only 30% of maximum drive current to ensure over 10 years' working life - a game changer in the ultra hi-res sector.

Blackhole Breakthrough

The blacker the blacks the more brilliant the image. With virtually zero light bounce back, ECLIPSE's blackhole light-trapping front surface characteristics offer unrivalled contrast ratio of up to 6,400:1. Even in the brightest sunshine or under direct lighting, ECLIPSE maintain's its impressive, punchy good looks.



Constant Calibration Technology

Keeping a screen looking as good as it does on day one is a must if you want to max the return on your investment. ECLIPSE offers the most advanced uniformity control system available in the LED market. Sensors are embedded into the screen surface to constantly measure and monitor the efficiency of every LED. The ability to make real-time adjustments to brightness and colour balance ensures the display remains perfectly calibrated with complete pixel-to-pixel homogeneity.

LOW REFRESH

HIGH REFRESH



Navigator i Video Control

digiLED ECLIPSE features a revolutionary video control chain - from video capture to individual pixel control.

Connected to your source engine via HDMI or SDI, the Navigator i is a power processor that incorporates state-of-the-art algorithms that deliver flawless up-scaling and down-scaling of content to get the most out of your ECLIPSE when using standard 2K or 4K content.

With the LEDs being driven at 2MHz and a video refresh interpolation rate of 400Hz images appear sharp and free of motion blur and ghosting, a thing of the past.



digiLED ECLIPSE

MODULE INFORMATION

Tough Touch Armour

It's a rough tough world out there! Whether your screen is installed into a fixed installation or spends its life on the road, the ability to take a knock is essential (but not too hard). The LED chips mounted on the front surface are encapsulated with a propriety nano-coating shield to give protection in the harshest environments. These new levels of durability will open up fresh markets for AV rental operators to use ultra hi-res LED with the confidence that their kit's up to the challenge.

Batch-to-Batch - always a match

For the first time ever in the history of LED displays, the date of manufacture of individual LED tiles (or modules depending on your terminology) is not a limiting factor. The ECLIPSE series has the ability to match old with new perfectly, so if you're acquiring a display and need more matching screen surface in the future, no problem - unheard of!

Remote Diagnostics

Control your assets remotely and get feedback from every component in the screen, right down to pixel level. In the event there is an issue, the system will automatically alert users via email or provide reports on a pre-defined basis.

Air-Tight Design

All digiLED ECLIPSE LED modules incorporate a revolutionary system developed to fully seal units for peerless reliability. The screen surface is smooth and solid, deeply black and perfectly seamless.

Easy Installation and Maintenance

On-site installation could not be simpler and safer :

1. Install the mechanical components WITHOUT the LEDs, preventing any risk of damage.
2. Connect to the reliable, rack format, external power supplies and the video processor.
3. Power ON then hot-plug the LED modules to see your screen coming to life.
4. Connect to the screen via WIFI and access the local configuration portal.

Remote Power

Off-board distributed power and data architecture allow for the simplest installation and maintenance, while removing generated heat from the screen surface.

The ability to remotely locate (up to 100m from the screen surface) the fanless, silent power supply units, opens up new possibilities in the AV rental market where weight is often a critical factor. Equally, for the fixed installation market, if weight is an issue, just locate the PSUs in a convenient location away from the display.

Incredible low power consumption at 170W per square metre average means that digiLED ECLIPSE is one of the most cost-effective display devices.

A screen for the future - 5 year warranty

It's reassuring to know that digiLED's ECLIPSE range is backed backed by a 5 year return to base warranty for outdoor and 3 years for indoor versions, whilst being supported by the legendary digiLED technical team.



Slim Power Supply Units fit conveniently into a standard 19inch 1U high rack system.



digILED ECLIPSE

SYSTEM SPECIFICATIONS

INDOOR

		Ei0.93	Ei1.4	Ei1.8	Ei2.2
LEDS					
Physical Pixel Pitch	mm	0.93	1.4	1.8	2.2
LEDs Per Pixel		1R1G1B			
Red Wavelength (Dominant)	nm	620			
Green Wavelength (Dominant)	nm	520			
Blue Wavelength (Dominant)	nm	465			
PIXELS					
Pixel Configuration		COB DELTA	COB DELTA	COB 3-in-1	COB 3-in-1
Pixels Per Area	pixels/m2	1,156,202	510,204	308,641	206,611
FRAMES					
Frame Height Options	mm	1,188 or 1,512 or 1,836 or 2,160			
Frame Width Options	mm	864 or 648			
Frame Depth	mm	TBC			
Frame Weights	kg	TBC			
Frame Surface Finish		Aluminium			
COB TILE					
LED Tile Width	mm	216			
LED Tile Height	mm	108			
Viewing Angle - Horizontal	degrees	178			
Viewing Angle - Vertical	degrees	178			
Ingress Protection		IP31			
Servicing		Front or Rear access			
Storage Temperature Range	degree C	-30 to +80			
Operating Temperature Range	degree C	-20 to +50			
Operating Humidity Range	%	10 to 95 Non-condensing			
COLOUR					
Processing Depth colours	bits	16 inc Brightness control			
Number of Colours		68.7 billion			
Refresh Rate	MHz	2			
Video Refresh Interpolation Rate	Hz	400			
BRIGHTNESS					
Brightness (After Calibration)	nits	>1,500			
Brightness Control		Auto/Manual			
Contrast ratio		3,500:1			
POWER					
Input Voltage	VAC	90-264			
Input Power (Average)	watts/m2	170			
Input Power (Maximum)	watts/m2	500			
Maximum PSU Distance From Screen	m	100			
OTHER					
Lifespan	hours	>100,000 at 75% Brightness			
Computer System Type		PC Win7, Vista, XP, WIN2000			
Video Input		HDMI SDI			
Remote Access		Web based			
Connectors		USB, HDMI RJ45			
Control System		Navigator i			
Certification		CE, EMC			

All specifications are correct at time of print, however they are liable to change and should be confirmed at point of order



digiLED ECLIPSE

OUTDOOR

SYSTEM SPECIFICATIONS

		Eo0.93	Eo1.4
LEDS			
Physical Pixel Pitch	mm	0.93	1.4
LEDs Per Pixel			1R1G1B
Red Wavelength (Dominant)	nm		620
Green Wavelength (Dominant)	nm		520
Blue Wavelength (Dominant)	nm		465
PIXELS			
Pixel Configuration		COB DELTA	COB DELTA
Pixels Per Area	pixels/m2	1,156,202	510,204
FRAMES			
Frame Height Options	mm	1,188 or 1,512 or 1,836 or 2,160	
Frame Width Options	mm	864 or 648	
Frame Depth	mm	TBC	
Frame Weights	kg	TBC	
Frame Surface Finish		Aluminium	
COB TILE			
LED Tile Width	mm	216	
LED Tile Height	mm	108	
Viewing Angle - Horizontal	degrees	178	
Viewing Angle - Vertical	degrees	178	
Ingress Protection		IP65	
Servicing		Front or Rear access	
Storage Temperature Range	degree C	-30 to +80	
Operating Temperature Range	degree C	-20 to +50	
Operating Humidity Range	%	10 to 95 Non-condensing	
COLOUR			
Processing Depth colours	bits	16 inc Brightness control	
Number of Colours		68.7 billion	
Refresh Rate	MHz	2	
Video Refresh Interpolation Rate	Hz	400	
BRIGHTNESS			
Brightness (After Calibration)	nits	>1,500	
Brightness Control		Auto/Manual	
Contrast ratio		3,500:1	
POWER			
Input Voltage	VAC	90-264	
Input Power (Average)	watts/m2	380	
Input Power (Maximum)	watts/m2	1,160	
Maximum PSU Distance From Screen	m	100	
OTHER			
Lifespan	hours	>100,000 at 75% Brightness	
Computer System Type		PC Win7, Vista, XP, WIN2000	
Video Input		HDMI SDI	
Remote Access		Web based	
Connectors		USB, HDMI RJ45	
Control System		Navigator i	
Certification		CE, EMC	

All specifications are correct at time of print, however they are liable to change and should be confirmed at point of order

